

**PUMPER BODY**  
Long Aluminum 2nd Gen Pumper

**CHASSIS**  
Saber FR Chassis

**CHASSIS AXLE, FRONT, CUSTOM**  
18,000 Lb Dana Axle

**AXLE, REAR**  
31,000 Lb Dana Axle

**ENGINE**  
450 HP Cummins X10 Engine

**TRANSMISSION**  
Allison 6th Gen, 3000 EVS P

**BUMPER**  
19" Extended Stainless Steel

**CAB**  
7010 Saber FR Cab

**BODY**

**A A A A I**  
1000 Gallon Poly Tank

**A A A I**  
980 Gallons of Water

**A**  
20 Gallon Foam Cell

**A**  
44.50" FF Rollup Rear Compt

**I**  
161" Rollup Full Height & Depth Front & Rear

**I H I**  
161" Rollup Full Height & Depth Front & Rear BIB

**I H I**

45" Control Zone Side Mount

1500 GPM Waterous CSU

**A**  
1.50" Crosslays Not Required

**A**  
2.50" Crosslay Not Required

**A**  
(2) 1.50" W/Tray Std. Capacity

**A**  
Generator Not Required

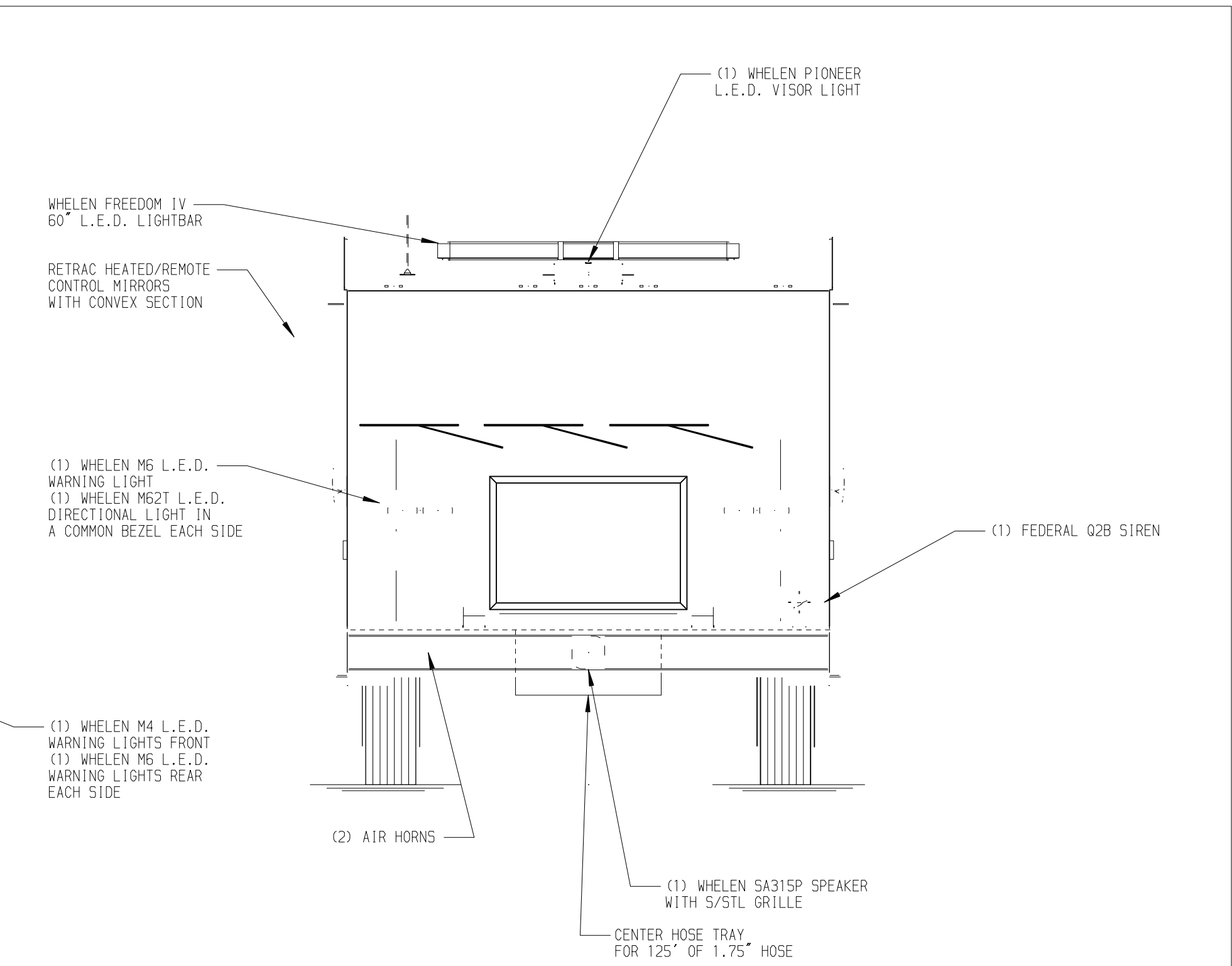
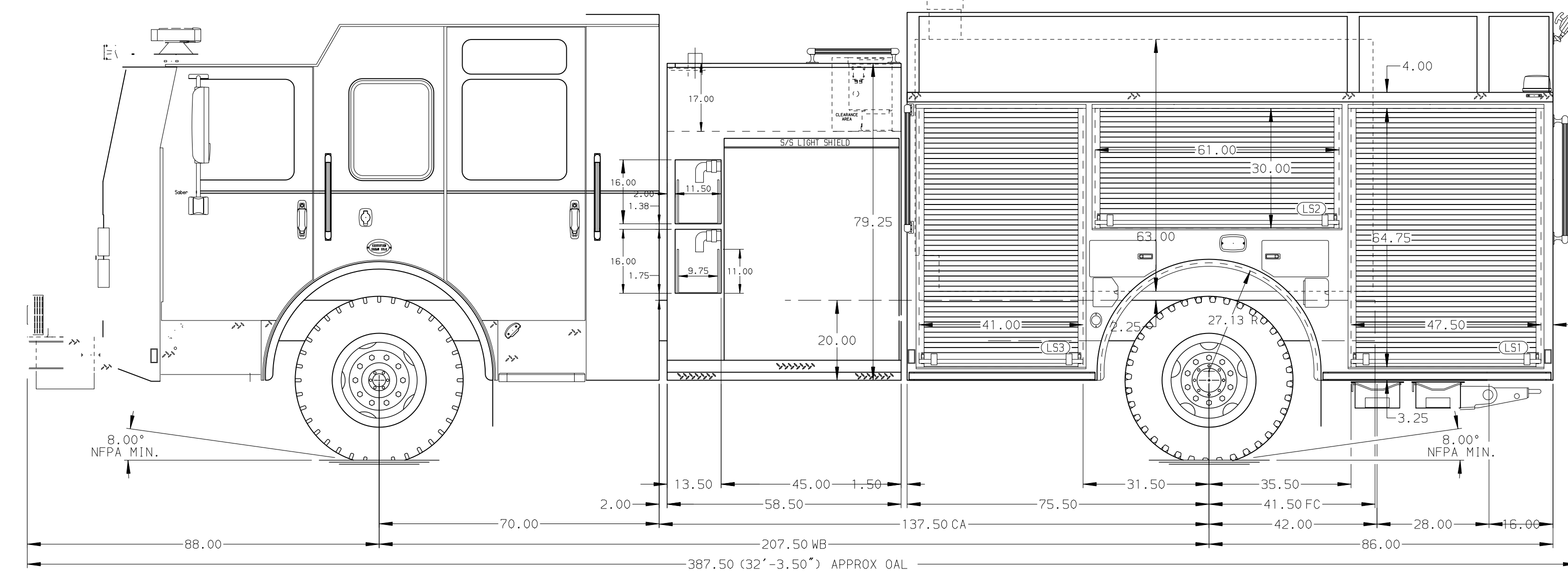
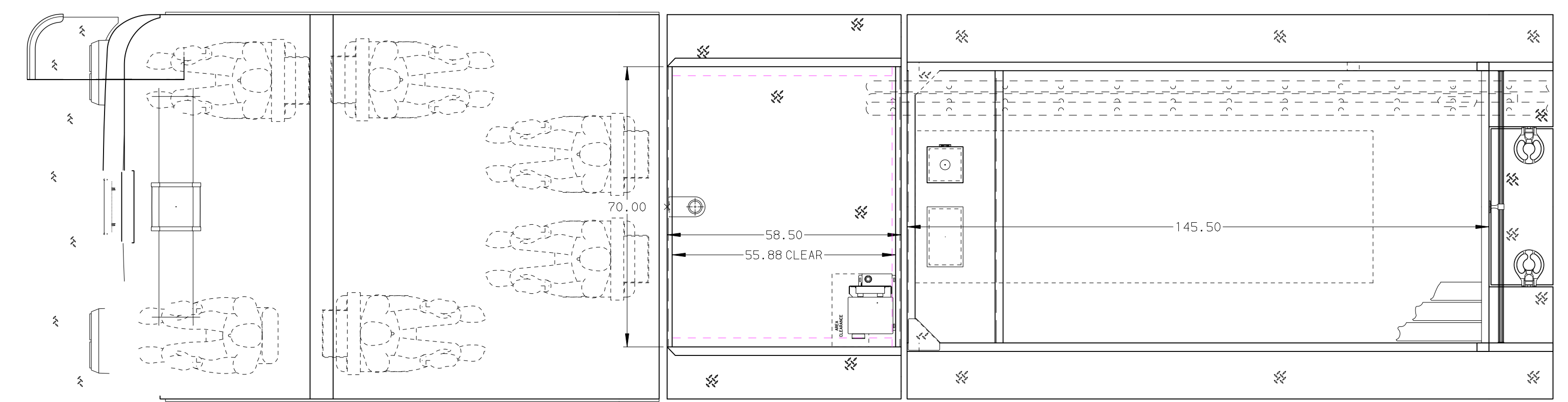
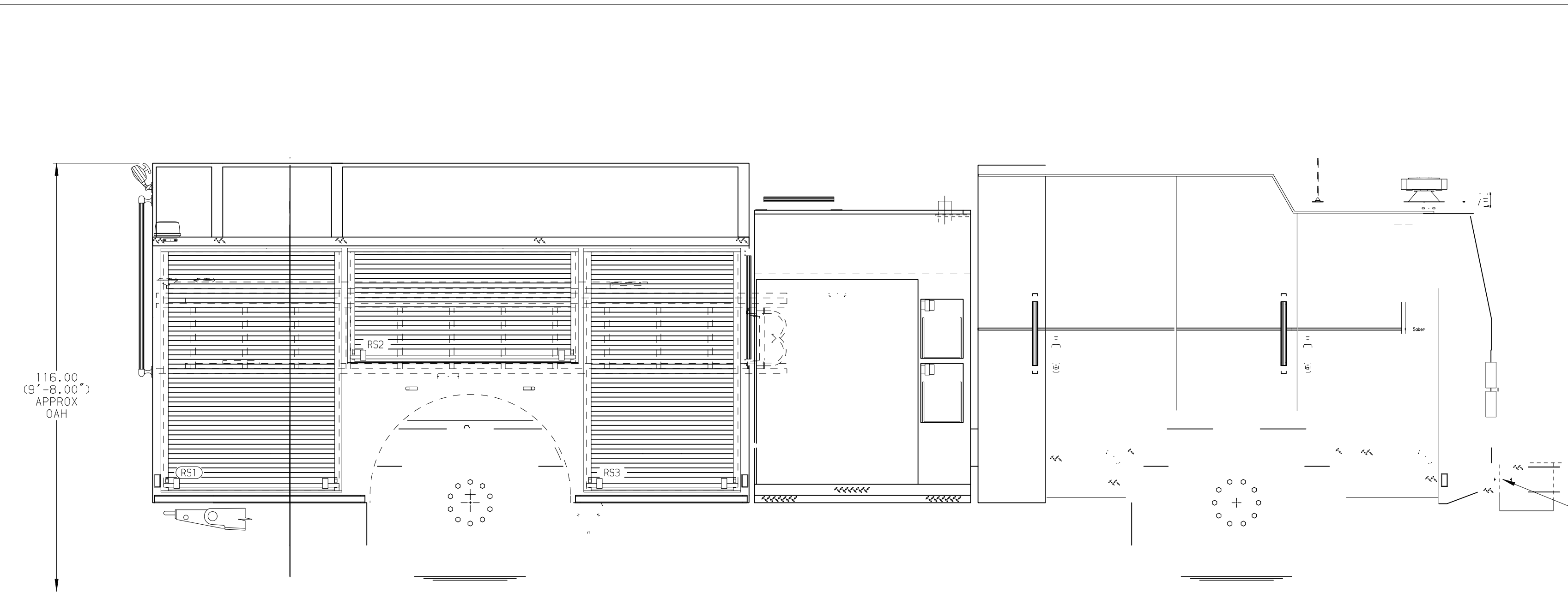
**A**  
Husky 3 Single Agent Foam System

**A**

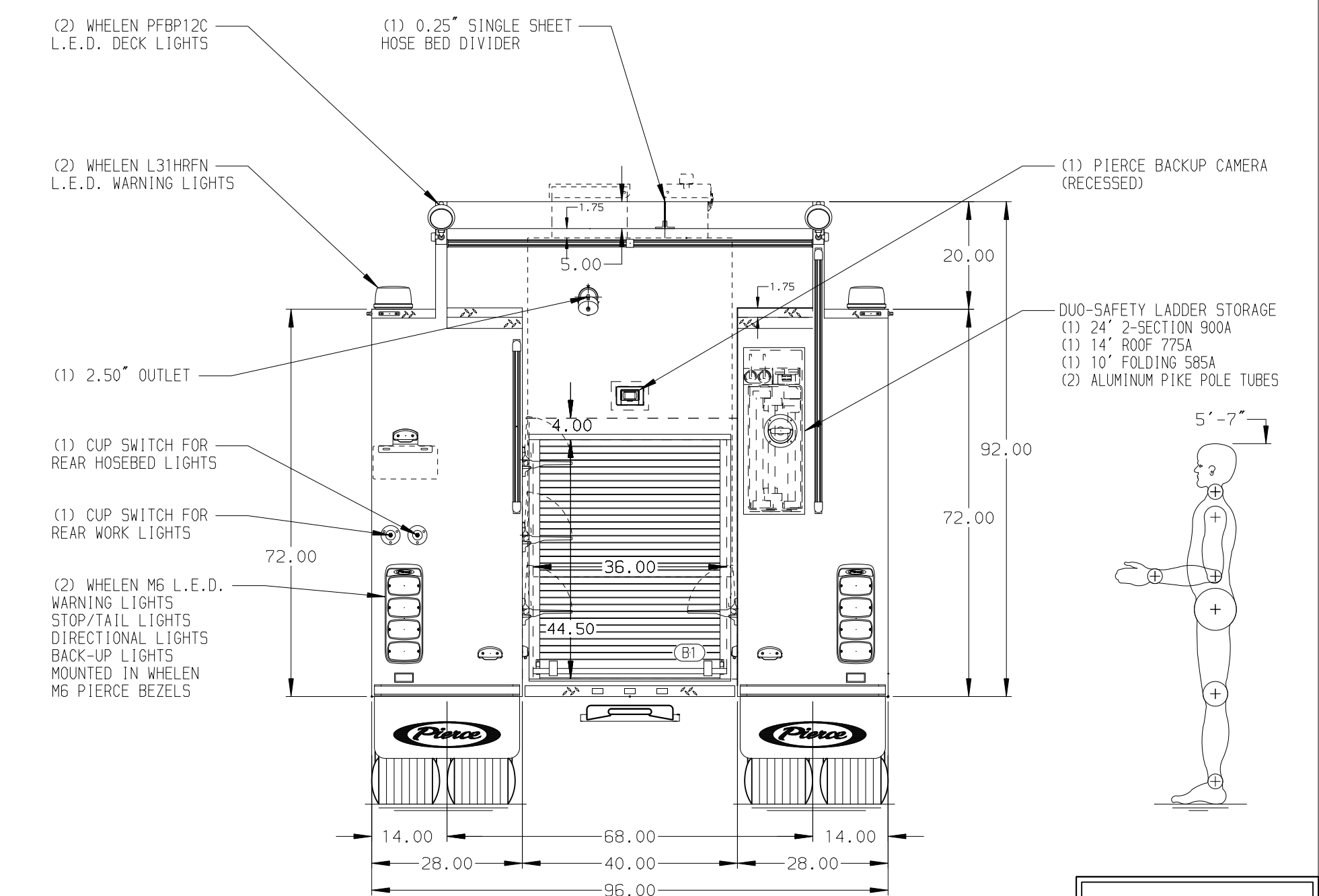
1 F I 1

**NOTE**  
DIMENSIONS SHOWN ARE APPROXIMATE AND ARE SUBJECT TO MINOR DEVIATIONS AS MAY OCCUR OR BE NECESSARY IN CONSTRUCTION. MINOR DETAILS NOT SHOWN.

- ONE 1.50" OUTLET WITH 2.00" PIPING AND SWIVEL LOCATED IN CENTER BUMPER TRAY
- SHORELINE RECEPTACLE WITH KUSSMAUL SUPER AUTO-EJECT LOCATED ON DRIVER SIDE OF THE CAB
- AIR INLET WITH DISCONNECT COUPLING IN THE DRIVER SIDE STEPWELL
- BATTERY CHARGER LOCATED PER ORDER
- BATTERY CHARGE INDICATOR LOCATED ON DRIVER SEAT RISER
- ADJUSTABLE SHELVES LOCATED PER ORDER
- ONE FLOOR MOUNTED SLIDE-OUT TRAY LOCATED PER ORDER



HOSEBED CAPACITY	
<b>BED 1</b>	1000' OF 5.00" D.J. POLY HOSE
<b>BED 2</b>	1000' OF 3.00" D.J. POLY HOSE

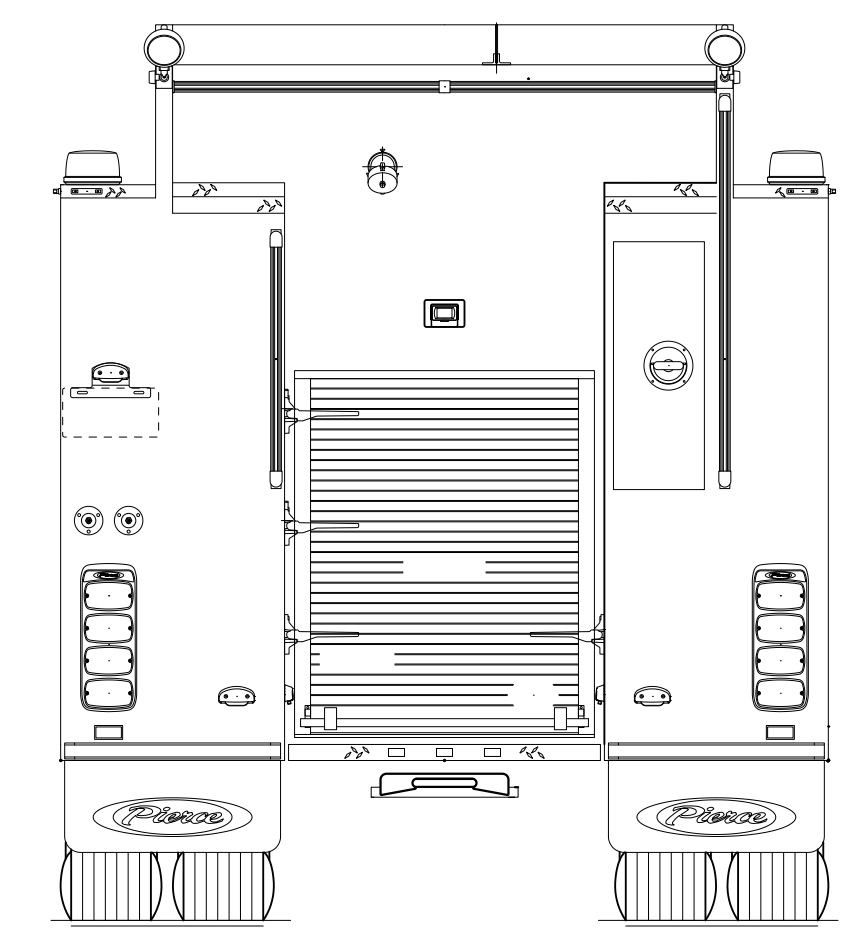
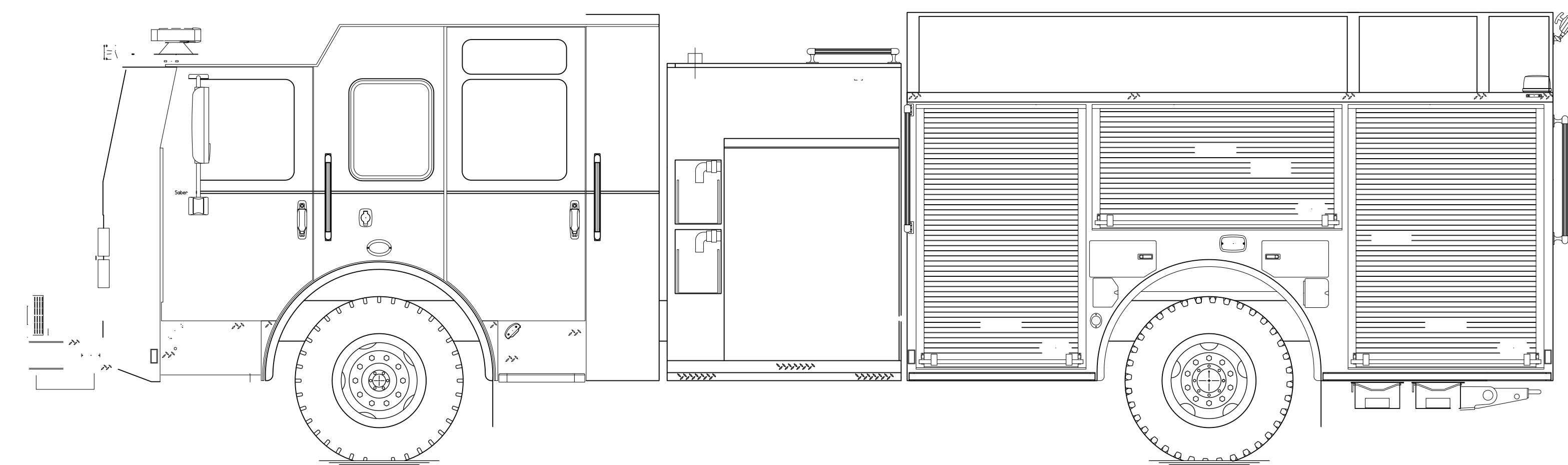
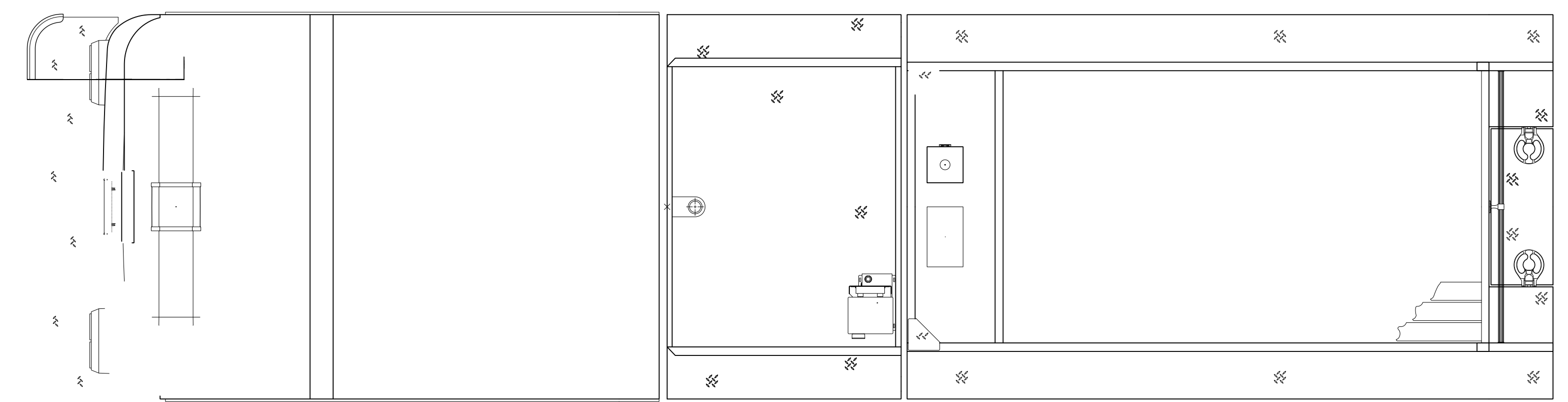
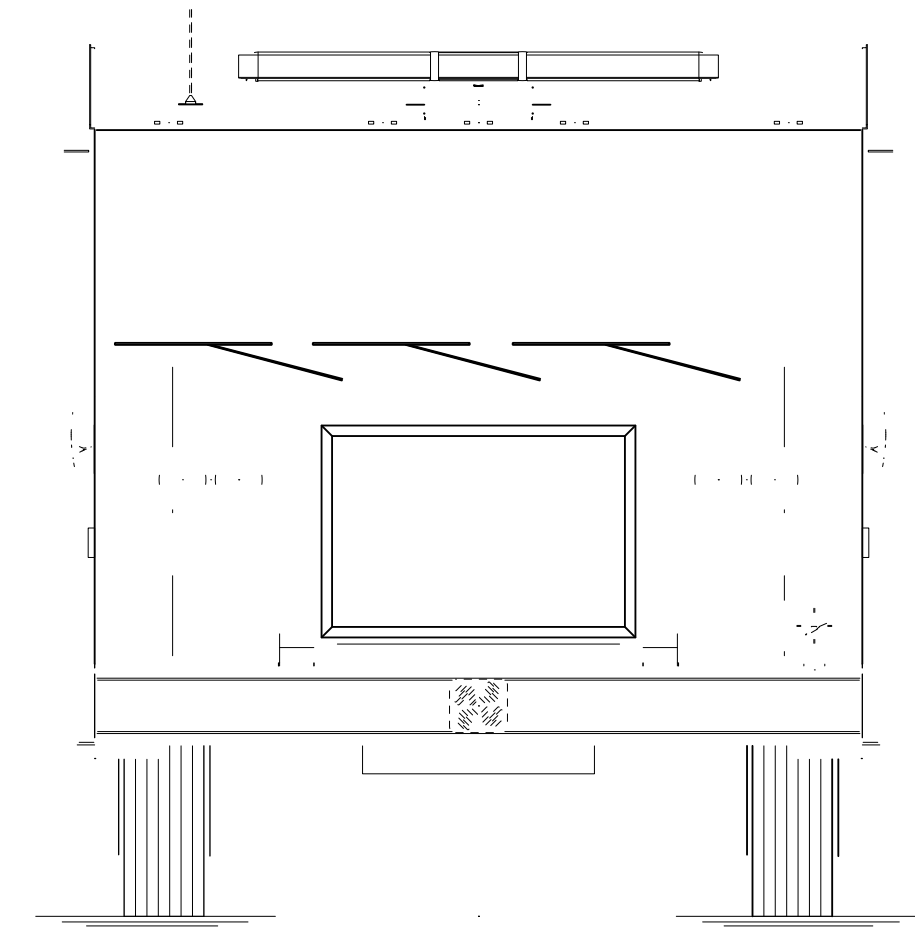
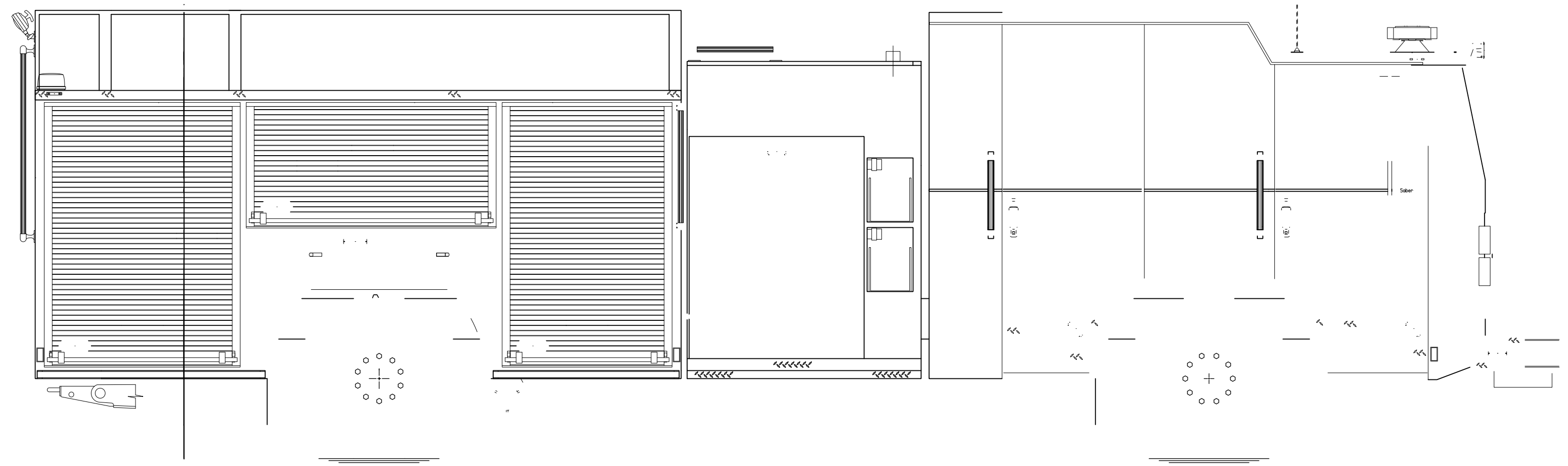


**NFPA 1900 (2024) COMPLIANT**

CUSTOMER APPROVAL			
APPROVED BY:			
DATE:			
REV	DATE	BY	CH

Pierce MANUFACTURING INC.		JOB NO.	-
TITLE	CHASSIS DATA	SCALE	1:24
DATE		DATE	
MAKE	PIERCE	DRAWN BY	-
MODEL		CHECKED BY	-
		SHEET SIZE	SHEET NO.
		D	1 OF 1

**\*\*\*\*\*NOTE\*\*\*\*\***  
INCOMPATIBLE ISSUE WITH THE DRAWING, PLEASE SEND DRAWING IN TO PIERCE FOR EVALUATION  
-PLEASE REMOVE THE OPTION FOR LOWER CROSSLAYS



**NOTE**  
LAYOUT AND SIZES PROVIDED BY CUSTOMERS  
MAY VARY DUE TO AVAILABLE WORKING SPACE.

COLOR LEGEND	
PINK	LETTERING (VINYL OR REFLECTIVE)
ORANGE	STRIPING (VINYL OR REFLECTIVE)
GREEN	GOLD LEAF
YELLOW	CUSTOMER FURNISHED PRODUCT

**CUSTOMER APPROVAL**

APPROVED BY: \_\_\_\_\_  
DATE: \_\_\_\_\_

REV	DATE	BY	CH



TITLE LETTERING, STRIPING, AND PAINTING INSTRUCTIONS  
FOR SSF Demonstrator Saber BMP  
DWG NO. LSP-LP

JOB NO.	-
SCALE	1:24
DATE	
DRAWN BY	-
CHECKED BY	-
SHEET SIZE	D
SHEET NO.	1 of 1

# CUSTOMER APPROVAL

APPROVED BY: \_\_\_\_\_

DATE: \_\_\_\_\_

NOTE: PLEASE REVIEW CHEVRON  
COVERAGE AND DOOR MATERIAL PER  
PULSE OPTIONS. NON-RELATED OR  
NON-CRITICAL MINOR DEVIATIONS  
MAY EXIST. \_ \_



## MANUFACTURING INC.

JOB NO.

-

SCALE

1:24

DRAWN BY

-

DATE

-

TITLE

CHEVRON DRAWING

-

FOR

-

-

DWG  
NO.

CHEVRON DRAWING

SHEET SIZE

A

SHEET NO.

1 OF 1